



We protect hightech.

'caleg / group.



Food-safe stainless steel cabi

We protect hightech – and get down to the meat of the matter.

Because when it comes to smoked food, your customers shouldn't have to do without the high quality they are used to from your brand. We've all experienced how quickly culinary anticipation can turn into disappointment from barbecuing together. The decisive factor is the correct amount of smoke, administered at the right time, the right temperature, the right dosage and the right intensity. And this is exactly what our control and switchgear systems do and monitor - assembled, wired and tested by cam. Incidentally, the aroma produced by this smoking system comes from renewable species of wood. This way, we protect the safety of the system, the environment and your energy efficiency.

Your one-stop supplier for hightech protection

The caleg-group is the specialist when it comes to keeping your electronics safe from harmful environmental influences.

Our **enclosures** and **cabinets** protect against:

- mechanical stress
- environmental factors (water, dust or sunlight)
- electromagnetic compatibility (EMC)

Our **cabling** and **test procedures** protect against:

- electrical faults

Our **cooling** and **heating solutions** protect against:

- overheating
- undercooling

We are your one-stop shop for this type of comprehensive protection and guarantee that your components will work together perfectly. Every product we produce is an individual solution tailored to the unique requirements of our customers.

Keeping your customers safe

The protection of your electronic components is important, but the safety of the people using it every day is even more important. Because with all our know-how about design and production and the standards associated with it, the safety of your customers has top priority.

Since we not only manufacture but also design enclosure solutions, we can take the user-friendliness of your systems into account and implement it in our designs.

Thus, we protect your customers and make working with your hightech equipment a pleasant experience.



Components become solutions

Our specialists at cam create unique complete solutions based on individual components. Here are our three main categories and some key figures:

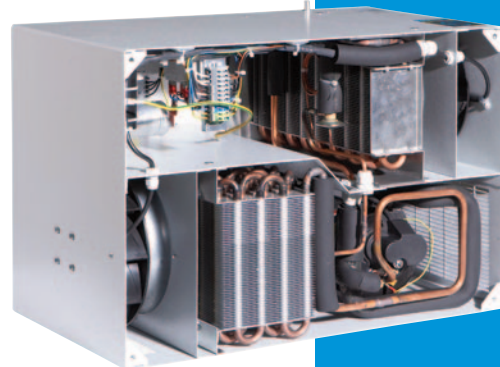
Electrical assembly: 50,000 assembly hours.

The electrical installation team at cam put in over 50,000 hours of installation work for our clients. Since quality starts with basic working conditions, our ESD-protected area is over 600 m² large. Our support specialists also take care of associated tasks, such as material provision and purchase for many of our customers. To top it off, our all-round service concept also includes optional electrical system testing and programming.



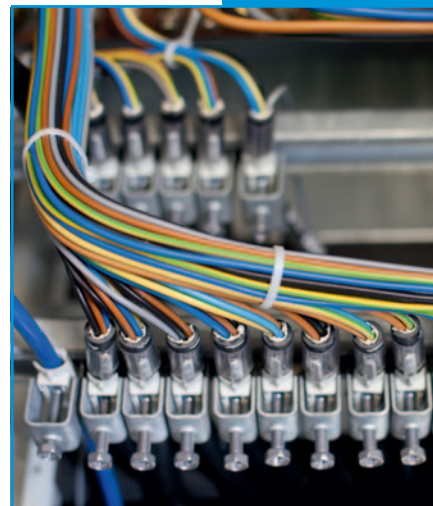
Refrigeration technology: 15,000 watts per unit is no problem for us.

To complement our range of services we also produce air/water cooling devices and active cooling devices in-house. And of course, each of the over 1,000 devices produced annually by cam has its own unique shape and design. Standard cooling capacities range from 400 to 15,000 watts per unit. Our modular air routing system is also highly specialized. It makes it possible to effectively cool an entire row of cabinets up to a length of 600 cm with just one cooling unit. In contrast to catalog items, our media connections and designs are exclusively made according to customer-specific specifications.



Cable assembly: 800,000 m of sheathed installation cable.

Finally, we assemble and supply cables for your switchgear. Last year, 800,000 m of sheathed installation cable with over 1,200,000 contacts left our production facilities. We currently process wire cross-sections of up to 240 mm², supplemented by simple or heavy duty connectors, crimp contacts and soldering work. Our range extends from simple single conductor cables and sheathed cables to complex bound cable harnesses. We provide these services from batch sizes of 1 onwards. from the construction of prototypes to the execution of all your switchgear construction activities. Our logistics floor also enables us to keep finished assemblies in stock.



The caleg-group Plants



The **Calau plant** is caleg-group's flagship plant, as well as its headquarters and has a production area of over 15,000 m².

The **Saarbrücken plant** has a production area of 7,000 m². This is where the caleg-group produces its custom-made 19-inch racks and plastics.

The 4,000 m² **Lubsco plant** specializes in metalworking and cable assembly.

In 2016/2017, the Calau site was enlarged to include a new hall with state-of-the-art painting and powder technology. At the same time, the machinery at the two other plants was harmonized and brought up to the same standard. The group's investments in these improvements exceeded 7.5 million Euro.

Companies belonging to the caleg-group

The **caleg Schrank und Gehäusebau GmbH** is the "manufacturer" of the caleg-group. They produce and develop highly individual enclosure and cabinet solutions in stainless steel, steel sheet, aluminum and plastic.

The **cam GmbH** is the "service provider" of the caleg-group and is responsible for assembly, component assembly and wiring work. A further core competency is the development and installation of enclosure air conditioning and ventilation.

More than 400 caleg-group employees are currently shaping the future on a production area of 26,000 m² with state-of-the-art equipment: from the development of customized enclosures and enclosure solutions to a wide variety of cabinet solutions, wiring and component assembly.

The caleg-group is represented by sales offices in: France, Switzerland, the Netherlands, Austria and Sweden.

Facts and Figures

Punching and laser cutting

1 x Trumpf TruMatic 3000
1 x Trumpf TruMatic 5000 FMC
2 x Trumpf TruMatic 6000 FMC
3 x Trumpf TruMatic 7000 FMC

With a fully automatic sheet storage system.

We process sheets up to:
3000 mm x 1500 mm

And a material thickness of:

- Steel sheet: 8 mm
- Stainless steel: 4 mm
- Aluminium: 8 mm

Bending, folding and rounding

10 x Amada
2 x ADIRA
1 x Weinbrenner
1 x Schröder PowerBend
1 x roll bender machine

We can process up to a length of 3400 mm with a maximum pressure of 170 tons.

Welding

- TIG, MIG, MAG and Plasma
- Steel sheet
- Stainless steel
- Aluminium
- Stud welding robot up to size M12
- Sanding or blasting (stainless steel)

Final processing

- Powder coating
- Foaming
- Final assembly
- Aluminum anodization
- Printing
- Cable assembly
- Wiring

International standards

- DIN ISO EN 9001:2015
- Approvals according to UL 50 and CSA 22.2.
- Welding according to DIN EN ISO 3834-2
- Welding on railway vehicles according to DIN EN ISO 15085-2
- Paintwork certificates from Alstom und DB